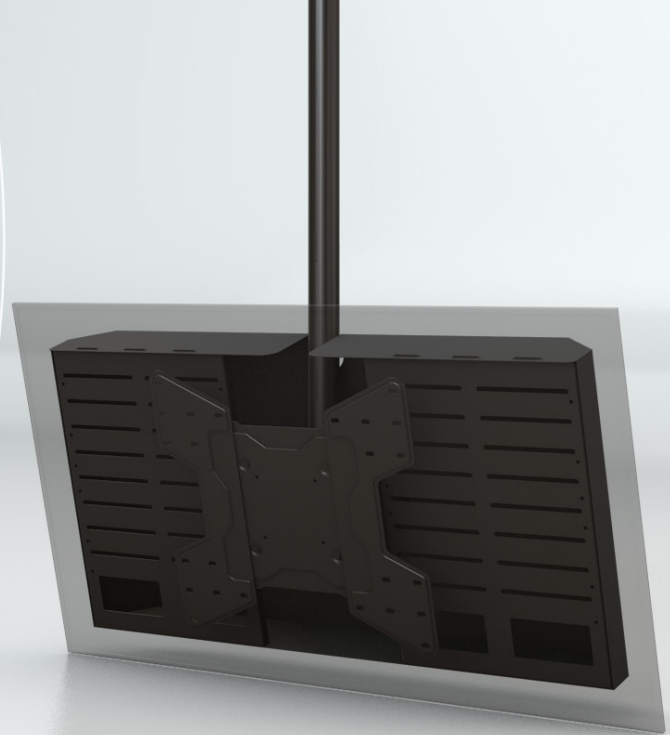


# ADCPU50 Universal Component Hub

## For Monitors 42" and Larger

### Ideal Solution for Public Places

- Designed for safety and security in any public area
- Perfect for airports, education, retail settings and more
- Hide components and cables out of sight
- Attach video players, power strips and access cables
- Large pass-through openings to route HDMI and other cables from components to the display
- Compatible with Crimson ceiling mounts C55V and C65



### ATTACH COMPONENTS

#### Multiple Slots

For attaching components and securing access cables.

### RETROFITTABLE

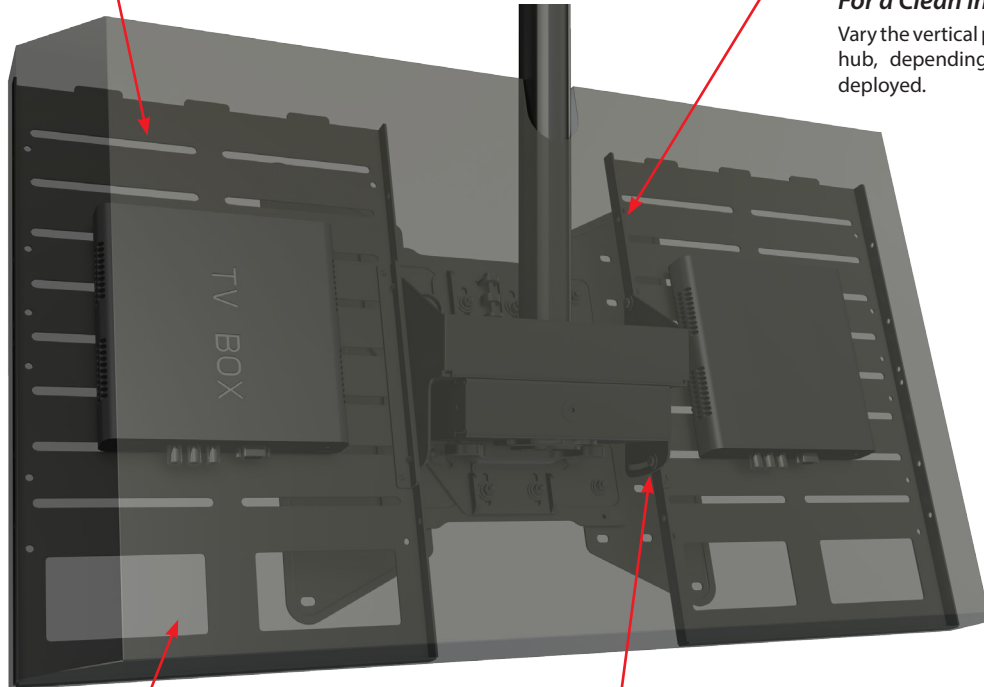
#### Utilize Existing 1.5" NPT Pipe

When replacing current display, existing pipe may be reused. Simply add a C55V or C65 with the ADCPU50 to complete installation.

### HEIGHT ADJUSTABLE

#### For a Clean Installation

Vary the vertical position of the component hub, depending on the size of display deployed.



### CABLE MANAGEMENT

#### Route Component Cables

Large openings for routing cables from components to display jack pack.

### INDEPENDENT TILT

#### Match the Tilt Angle of Display

Whether tilted or not, the ADCPU50 tilt angle can be adjusted to follow the tilt angle of the display.

# ADCPU50 Universal Component Hub

## For Monitors 42" and Larger

1-866-MOUNT-TV  
www.crimsonav.com



Attribute	Value
Monitor size	42" and larger
Orientation	Landscape
Weight capacity	50 lb for hub plus rating on ceiling mount
Compatible Ceiling Mounts	C55V, C65
Tilt	Independent tilt adjustable to fit the tilt angle of mount
Rotation	Lockable at 30° or 45°
Security	Optional security screws for cover attachment
Packaging Dimensions	37" x 21.26" x 5.91"
Shipping weight	32.22 lb
Construction	High-grade cold rolled steel
Product finish	Scratch resistant epoxy powder coat
Color	Black
Model number	ADCPU50
Warranty	Lifetime

Designed for safety and security in any public area, the ADCPU50 is perfect for airports, education, retail settings and more. ADCPU50 universal component hub puts components and wiring out of sight and out of reach to the public.

